



Unparalleled compute  
power for hazardous areas.  
True data center capability  
& performance at  
the edge.

## BIQMIND HAZPRO™ SERVER



### PERFORMANCE

- True server performance with Intel® Xeon® processor-based CPU#
- Faster storage with NVMe SSDs (7X faster than SATA storage)



### RELIABILITY

- No moving parts
- Passive cooling
- Components with wide band temperature support



### MANAGEABILITY

- Integrated BMC Support
- Redfish®, KVM over IP, IPMI 2
- UEFI boot



### CERTIFICATION

- CE, FCC, RoHS
- ATEX, IECEx, AEx



### SUPPORT

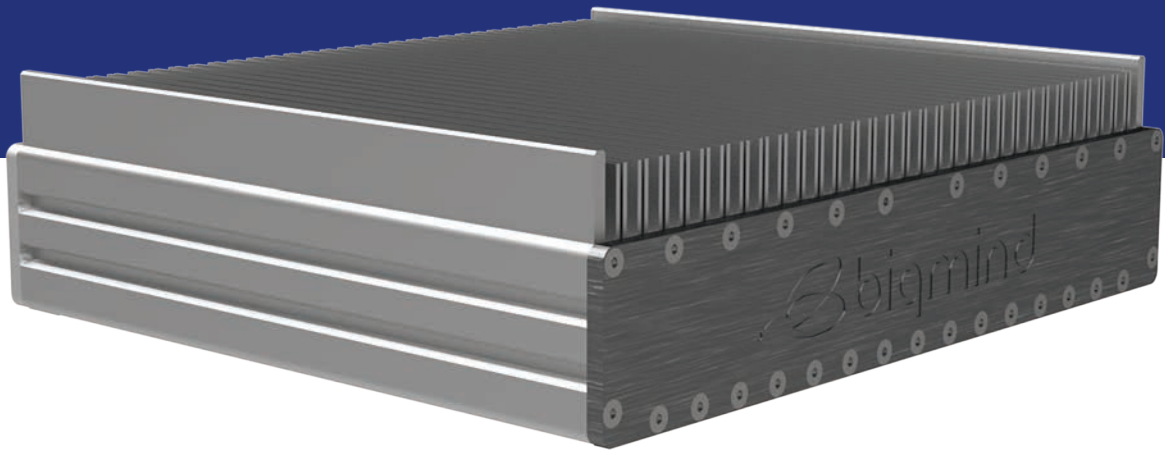
- Replace not repair
- Lower total cost of ownership
- Extended product lifecycle

Bigmind HazPro™ Server is the world's first real hazardous area rated server powered by an Intel® Xeon® processor.

Reliable and durable, the server has been designed, built and rigorously tested for use in extreme conditions. It delivers unparalleled enterprise grade server capability and performance in hazardous environments, providing an extended product cycle.

Robustness and toughness are inherent. HazPro™ Server components are resistant to corrosion, humidity and wide temperature ranges. Engineered to operate in IEC Zone 2 rated hazardous areas (certifications pending); the server's increased safety design/certification and built-in remote management capabilities dramatically reduce operation and maintenance costs.

HazPro™ Server's higher compute capability, large memory, processing power, and next generation faster NVMe storage space options further allow the latest technologies such as containerization, to be run smoothly and efficiently in the toughest conditions.





## SERVER SPECIFICATIONS

System Chipset	CPU	Intel® Xeon® D-1539	
	Maximum speed	1.6 GHz	
	Max Turbo Frequency	2.2 GHz	
	L3 Cache	12 MB	
	Cores	8	
	Threads	16	
	BIOS	AMI	
Memory	Technology	Dual channel 2133 MHz ECC DDR4	
	Slot	4 x RDIMM (up to 32 GB per slot) or UDIMM (up to 16 GB per slot), 288 pins	
	Maximum Capacity	128 GB	
Baseboard Management Controller (BMC)	Chipset	Aspeed AST2500	
	Firmware	AMI MegaRAC®	
	Protocols	Redfish®, KVM over IP, IPMI 2	
Ethernet	Network Controllers	1 GbE Intel® i210IT 10 GbE SFP+ Intel® SoC	
	Interfaces	2 x PoE++ RJ45 (PoE 802.3bt Type 4) 2 x SFP+	
Expansion slots	M.2 (2240/2260/2280/22110)	6 x M.2 M Key 1 x M.2 E Key (for Wi-Fi)	
Storage	Technology	M.2 NVMe	
	Slot	6 x M.2 slots (256 GB/512 GB/1 TB)	
	Maximum Capacity	6 TB ( 6 X 1 TB)	
Display	Interface	KVM over IP	
LED and Switch	Button/LED	Combined LED status & pushbutton	
Power	Input Voltage	12VDC (reverse polarity protection)	
	Power Consumption	Typical: 80 watts, Maximum: 140 watts	
Environment	Temperature	Operating -20C to 50C	Non-operating -40C to 85C
	Humidity	Operating 10 to 90 %RH	Non-operating 10 to 90%RH
	Vibration	5 Grms, 5-500 Hz, 3 Axes	
	Shock	50 Grms, half-sine 11 ms duration	
	IP rating	IP66	
	Altitude	Up to 4572 meters above sea level	
Mechanical	Dimensions	404 mm (W) x 313 mm (D) x 100 mm (H)	
	Weight	9 kg	
	Installation	Wall mount	
OS Support	CentOS v7.4, Red Hat® Enterprise Linux® (RHEL) v7.4/7.5/7.6, Red Hat® Enterprise Linux® (RHEL) Atomic v7.4, Windows Pro 10		
Certifications*	EMC, FCC, CE, WEEE, UL, RoHS ATEX/IECEX Ex ec IIB T4 Gc ATEX/IECEX Ex ec IIIC T135C Dc Class I Zone 2 AEx ec IIB T4 Gc Class I Zone 22 AEx ec IIIC T135C Dc Class I Division 2, Groups C AND D T4 Class I Division 2 Groups E F AND G T4		

\*Certifications pending, above specifications and appearance may be subject to change

®Intel® and Xeon® are trademarks of Intel Corporation or its subsidiaries in the U.S.and/or other countries.

**Applications:**

business continuity, connected factories (data collection & analysis), disaster recovery, drilling platforms, emergency response, process automation, robotics, rugged data back-up, smart power grid, edge computing, SCADA

**Industries:**

agriculture, chemicals, emergency response, food processing, industrial gases, logistics/warehousing, mining, oil & gas, petrochemicals, pharmaceutical, pipelines, power distribution and generation, pulp & paper, telecommunications, transportation (rail/road/ship), utilities (electrical, water), waste water

**ABOUT BIQMIND**

Biqmind offers leading-edge technologies to companies that want to deliver rapid innovation, but are constrained by lack of expertise or in-house resources. Our software, services and hardware can be applied where there is a need to cost-effectively extend, converge and build solutions rapidly and deliver them to the operational edge.

**Biqmind Pte Ltd**

The Strategy, 2 International Business Park Road, Tower 2, #02-27, Singapore 609930  
+65 6661 9777 | [transform@biqmind.com](mailto:transform@biqmind.com) | [www.biqmind.com](http://www.biqmind.com)

©2019 Biqmind Pte Ltd  
BIQM-BROC-BHZS-01A 2019-05

