

Intel® Xeon® processor-based performance & peace of mind for your industrial edge computing needs

# BIQMIND HARSHPRO™ SERVER



## PERFORMANCE

- True server performance with Intel® Xeon® processor-based CPU\*
- Faster storage with NVMe SSDs (7X faster than SATA storage)



## RELIABILITY

- No moving parts
- Passive cooling
- Components with wide band temperature support



## MANAGEABILITY

- Integrated BMC Support
- Redfish®, KVM over IP, IPMI 2
- UEFI boot



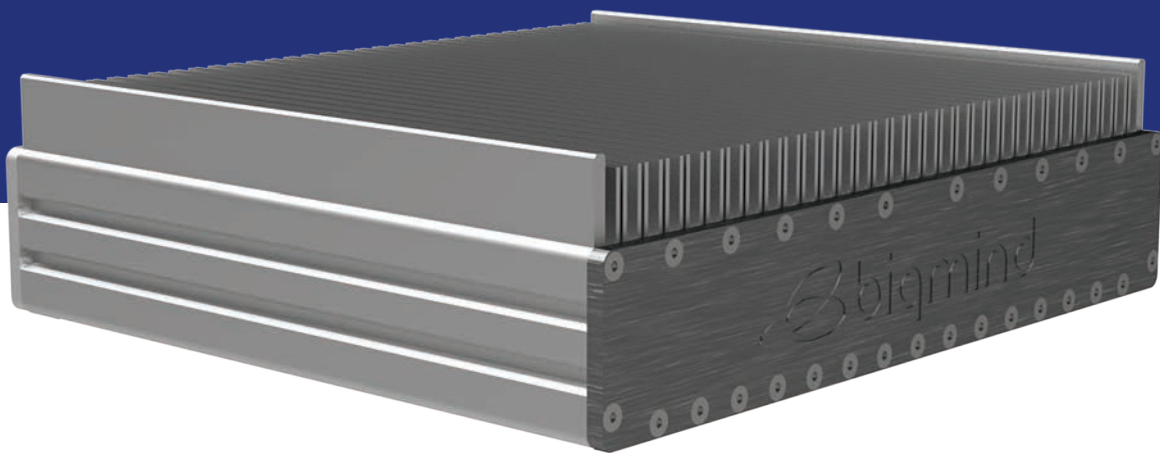
## SUPPORT

- Replace not repair
- Lower total cost of ownership
- Extended product lifecycle

Biqmind HarshPro™ Server sets a new precedent in harsh environments for computing performance which delivers server-class performance, reliability and manageability. The unique challenges and complications of edge computing in harsh conditions can now be addressed with true server-class, Intel® Xeon® processor-based power.

Be it conditions such as extreme cold, heat, or altitude; Biqmind HarshPro™ Server is built with components that provide resistance to corrosion, humidity, and wide temperature ranges. The server's IP66 rated enclosure ensures protection from water and dust.

Run your mission-critical edge computing applications and real-time data analytics with minimal latency, and total peace of mind.



## SERVER SPECIFICATIONS

<b>System Chipset</b>	<b>CPU</b>	Intel® Xeon® D-1539	
	<b>Maximum speed</b>	1.6 GHz	
	<b>Max Turbo Frequency</b>	2.2 GHz	
	<b>L3 Cache</b>	12 MB	
	<b>Cores</b>	8	
	<b>Threads</b>	16	
	<b>BIOS</b>	AMI	
<b>Memory</b>	<b>Technology</b>	Dual channel 2133 MHz ECC DDR4	
	<b>Slot</b>	4 x RDIMM (up to 32 GB per slot) or UDIMM (up to 16 GB per slot), 288 pins	
	<b>Maximum Capacity</b>	128 GB	
<b>Baseboard Management Controller (BMC)</b>	<b>Chipset</b>	Aspeed AST2500	
	<b>Firmware</b>	AMI MegaRAC®	
	<b>Protocols</b>	Redfish®, KVM over IP, IPMI 2	
<b>Ethernet</b>	<b>Network Controllers</b>	1 GbE Intel® i210IT	
		10 GbE SFP+ Intel® SoC	
	<b>Interfaces</b>	2 x PoE++ RJ45 (PoE 802.3bt Type 4) 2 x SFP+	
<b>Expansion slots</b>	<b>M.2 (2240/2260/2280/22110)</b>	6 x M.2 M Key 1 x M.2 E Key (for WiFi)	
<b>Storage</b>	<b>Technology</b>	M.2 NVMe	
	<b>Slot</b>	6 x M.2 slots (256 GB/512 GB/1 TB)	
	<b>Maximum Capacity</b>	6 TB ( 6 X 1 TB)	
<b>Display</b>	<b>Interface</b>	KVM over IP	
<b>LED and Switch</b>	<b>Button / LED</b>	Combined LED status & pushbutton	
<b>Power</b>	<b>Input Voltage</b>	12VDC (reverse polarity protection)	
	<b>Power Consumption</b>	Typical: 80 watts, Maximum: 140 watts	
<b>Environment</b>	<b>Temperature</b>	Operating	Non-operating
		-20C to 50C	-40C to 85C
	<b>Humidity</b>	Operating	Non-operating
		10 to 90 %RH	10 to 90%RH
	<b>Vibration</b>	5 Grms, 5-500 Hz, 3 Axes	
	<b>Shock</b>	50 Grms, half-sine 11 ms duration	
	<b>IP rating</b>	IP66	
<b>Altitude</b>	Up to 4572 meters above sea level		
<b>Mechanical</b>	<b>Dimensions</b>	404 mm (W) x 313 mm (D) x 100 mm (H)	
	<b>Weight</b>	9 kg	
	<b>Installation</b>	Wall mount, desk, DIN rail	
<b>OS Support</b>	CentOS v7.4, Red Hat® Enterprise Linux® (RHEL) v7.4/7.5/7.6, Red Hat® Enterprise Linux® (RHEL) Atomic v7.4, Windows Pro 10		
<b>Certifications*</b>	EMC, FCC, CE, WEEE, UL, RoHS		

\*Certifications pending  
Above specifications and appearance may be subject to change

†Intel and Xeon are trademarks of Intel Corporation or its subsidiaries in the U.S. and/or other countries.



**Applications:**

autonomous vehicles, business continuity, building automation, connected factories (data collection & analysis), disaster recovery, drilling platforms, emergency response, process automation, robotics, rugged data back-up, smart power grid, telecom base station edge computing, windfarms, SCADA

**Industries:**

agriculture, emergency response, oil and gas, power distribution and generation, transportation (rail/road/ship), logistics/warehousing, telecommunications, mining, utilities (electrical, water)

**ABOUT BIQMIND**

Biqmind offers leading-edge technologies to companies that want to deliver rapid innovation, but are constrained by lack of expertise or in-house resources. Our software, services and hardware can be applied where there is a need to cost-effectively extend, converge and build solutions rapidly and deliver them to the operational edge.



**Biqmind Pte Ltd**

The Strategy, 2 International Business Park Road, Tower 2, #02-27, Singapore 609930  
+65 6661 9777 | transform@biqmind.com | www.biqmind.com

©2019 Biqmind Pte Ltd  
BIQM-BROC-BHRS-01A 2019-04

